



Telephone: 0300 3000 007  
Email: [lpt.sais@nhs.net](mailto:lpt.sais@nhs.net)

A university teaching and research-active Trust

Bridge Park Plaza  
Bridge Park Road  
Thurmaston  
Leicester  
LE4 8PQ

[www.leicspart.nhs.uk](http://www.leicspart.nhs.uk)

September-December 2023

Dear Parent / Carer,

### Annual seasonal flu vaccination is now due

All children from reception to year 11 are being offered the flu vaccination in school as part of the national vaccination programme. Flu can be an unpleasant illness and make some people seriously ill. The vaccination is **free, safe and effective**. It helps to protect against seasonal flu and serious complications such as bronchitis, ear infections and pneumonia – and will also help to prevent the spread of flu and protect others who are vulnerable. There are two different types of vaccine available:

#### Nasal spray flu vaccine

Offers the best protection against flu. It is given as a spray squirted up each nostril. It's quick and painless.

For some children the nasal spray is not suitable for medical reasons. Our team will review the medical information submitted before offering the flu vaccine injection.

The nasal vaccine contains traces of a highly processed form of porcine gelatine.

#### Flu vaccine injection

The injection is given into the muscle in the upper arm, which may cause soreness.

This vaccine is offered as an alternative if the nasal spray is not suitable due to medical reasons.

This vaccine does not contain porcine gelatine.

To find out more, visit: [tiny.cc/flu Vaccination](http://tiny.cc/flu Vaccination)

For primary school age children, we will only give your child the flu vaccination if we have your consent. Please do this as soon as possible, using the instructions below. You only need to submit your decision **once**.

#### How to give consent for your child to get the flu vaccination

- Make a note of the code for your school. For **Grove Primary School** the school code is **LE141469** and visit [www.leicsandrutlandimms.co.uk](http://www.leicsandrutlandimms.co.uk) or scan the QR code using your smartphone camera to go straight to the website.
- Select **Seasonal Flu** and enter the school code. On the consent declaration page you can consent for either the nasal flu vaccine **or** the injectable flu vaccine.
- You will receive a confirmation email when the form is submitted.



If you are unable to complete the form online, please call us on **0300 300 0007** or e-mail [lpt.sais@nhs.net](mailto:lpt.sais@nhs.net) with your contact details. If you change your mind about your consent decision, please call us on the number above to change it.

Your school will let you know when the flu vaccination session will take place. **The consent system will close two working days before the vaccination session.** You will not be able to submit a consent form on the day.

Yours sincerely,

School Aged Immunisation Service

### Frequently asked questions about the flu vaccine

My child has a health condition and normally has the vaccine from the GP.	They are also able to have the vaccination at school.
What are the side effects?	Children may develop a runny or blocked nose, headache, general tiredness and some loss of appetite. These symptoms are much milder than developing fu or complications associated with flu. Serious side-effects are uncommon.
Why is there is new flu injection every year?	Flu viruses change every year, so flu vaccines are updated to protect against the latest strains.
Where can I read the vaccine product leaflet?	For the nasal flu vaccine, visit: <a href="http://www.medicines.org.uk/emc/files/pil.3296.pdf">www.medicines.org.uk/emc/files/pil.3296.pdf</a> For the injectable flu vaccine, visit: <a href="http://www.medicines.org.uk/emc/files/pil.12882.pdf">www.medicines.org.uk/emc/files/pil.12882.pdf</a>
How can I prepare my child for the vaccination?	Watch our animation: <a href="http://www.healthforkids.co.uk/staying-healthy/stopping-flu">www.healthforkids.co.uk/staying-healthy/stopping-flu</a>
My child is scared of needles, is there any support available?	You can include this information on your consent form and our team will do the best to support. Also, this video may help reassure young people about their vaccination experience visit: <a href="http://tiny.cc/reassurance">http://tiny.cc/reassurance</a>
It says the email addresses don't match or it doesn't recognise the school code.	Make sure there are no spaces or punctuation before or after the email address and the school code.
What if my child is absent or unwell on the session day?	Details of any additional opportunity for a vaccination will be sent via email.
What's the national vaccination programme?	Visit: <a href="http://www.nhs.uk/conditions/vaccinations">www.nhs.uk/conditions/vaccinations</a> to find out more.

If you would like this information in another language, visit:

[www.leicspart.nhs.uk/service/schoolagedimms](http://www.leicspart.nhs.uk/service/schoolagedimms)

Arabic

ذا كنت ترغب في قراءة هذه الرسالة بلغة أخرى، قم بزيارة موقعنا على الإنترنت

Gujarati

જો તમે આ પત્ર ગુજરાતીમાં વાંચવા માંગતા હો તો અમારી વેબસાઇટ પર જાઓ

Polish

Jeśli chcesz przeczytać ten list w innym języku, przejdź na naszą stronę.

Punjabi

ਜੇ ਤੁਸੀਂ ਇਸ ਪੱਤਰ ਨੂੰ ਕਿਸੇ ਹੋਰ ਭਾਸ਼ਾ ਵਿੱਚ ਪੜ੍ਹਨਾ ਚਾਹੁੰਦੇ ਹੋ ਤਾਂ ਸਾਡੀ ਵੈੱਬਸਾਈਟ 'ਤੇ ਜਾਓ

Somali

Haddii aad jeclaan lahayd inaad ku akhrido warqadan luuqad kale, booqo boggayaga internetka

Urdu

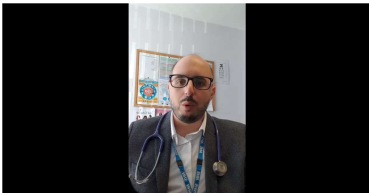
اگر آپ اردو میں یہ خط پڑھنا چاہتے ہیں تو ہماری ویب سائٹ پر جائیں۔

Ukrainian

Якщо ви хотіли б прочитати цей лист іншою мовою, відвідайте

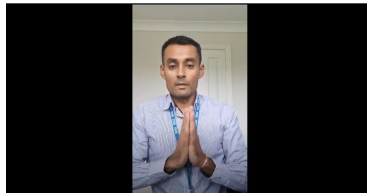
You can watch a video in these languages:

Arabic



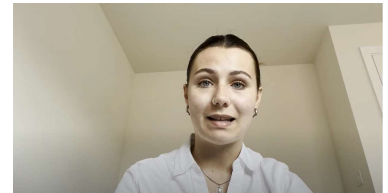
<https://youtu.be/xy3TNS1rB1I>

Gujarati



<https://youtu.be/TOUXxv2QcmY>

Polish



<https://youtu.be/VIYZwImuHV0>

Hindi



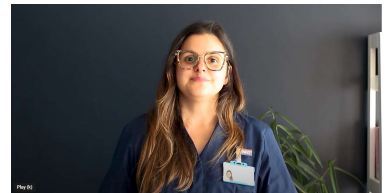
<https://youtu.be/QFfqx2QwkjA>

Farsi



<https://youtu.be/8HHliNhYaJQ>

Spanish



<https://youtu.be/paIBzCDQQKw>

More languages will continue to be added.

If you would like to read the flu vaccination leaflet in another language, visit:

[www.gov.uk/government/publications/flu-vaccination-leaflets-and-posters](http://www.gov.uk/government/publications/flu-vaccination-leaflets-and-posters)

[English](#), [Albanian](#), [Arabic](#), [Bengali](#), [Bulgarian](#), [Chinese \(simplified\)](#), [Chinese \(traditional, Cantonese\)](#), [Estonian](#), [Farsi](#), [French](#), [Greek](#), [Gujarati](#), [Hindi](#), [Latvian](#), [Lithuanian](#), [Panjabi](#), [Pashto](#), [Polish](#), [Portuguese](#), [Romanian](#), [Romany](#), [Russian](#), [Somali](#), [Spanish](#), [Tagalog](#), [Turkish](#), [Twi](#), [Ukrainian](#), [Urdu](#) and [Yiddish](#).

An [English large print](#) version is available to order.

A [Braille version](#) of this leaflet is available to order.

A British Sign Language video of this leaflet is available to [download](#).

An [audio version](#) is available to download.

Trust Headquarters: Bridge Park Plaza, Bridge Park Road, Thurmaston, Leicester. LE4 8PQ

Chair: Crishni Waring Chief Executive: Angela Hillery

We are a smoke-free Trust.

View our privacy notice at [www.leicspart.nhs.uk/\\_Aboutus-Whatwedowithyourinformationprivacynotice.aspx](http://www.leicspart.nhs.uk/_Aboutus-Whatwedowithyourinformationprivacynotice.aspx)

